



ONE PIECE TOILET

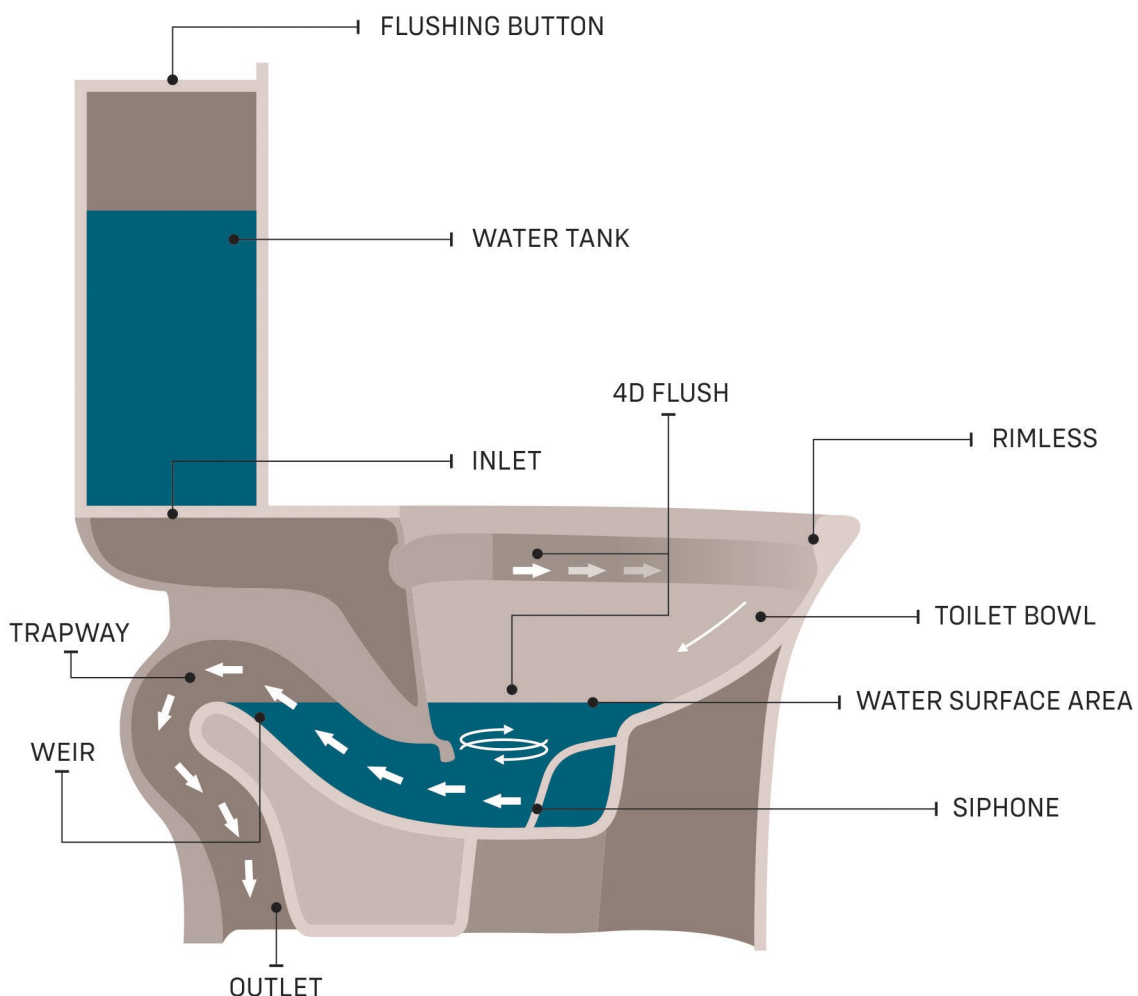
How It Work ?

In toilets, the P-trap and S-trap refer to the shape and orientation of the trap that connects the toilet bowl to the waste pipe.

A P-trap toilet has a trap that is shaped like a "P". It is a curved pipe that is designed to hold water and create a barrier between the toilet bowl and the waste pipe. The water in the P-trap prevents sewer gases from entering the room, as the gases are unable to flow back up through the trap. P-trap toilets are more common in modern construction and renovations, as they are more effective in preventing odors and are easier to maintain.

An S-trap toilet has a trap that is shaped like an "S". This type of trap commonly used in plumbing systems. S-trap toilets have a straight pipe that connects the toilet bowl to the waste pipe, and the trap is formed by a bend in the pipe just below the toilet bowl. While S-trap toilets can be easier to install in certain situations where the waste pipe is located in a different position than where the toilet will be placed. The bend in the trap allows for more flexibility in positioning the toilet, which can be useful in older buildings or in situations where the plumbing system is not easily adaptable.

In general, P-trap toilets are the preferred option due to their ease of maintenance, while S-trap toilets is a design that work effectively.



WALL MOUNT TOILET

How It Work ?

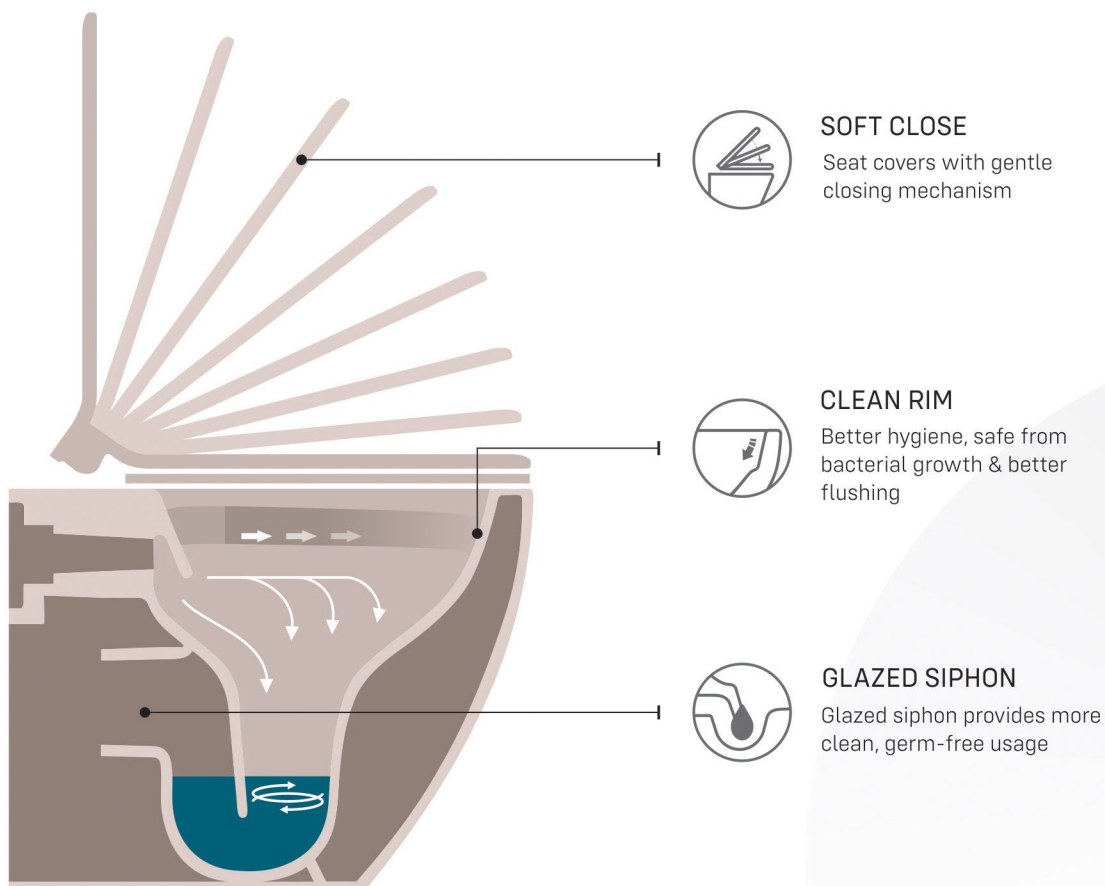
Common in European bathrooms, wall-mounted toilets started gaining popularity in the india as well and for good reason. There are numerous advantages to using them, both in terms of used space and practicality and design overall. But first let's discuss a few general details.

So what is a wall-hung toilet and what makes it special? Their main distinctive feature which differentiates them from floor-mount toilets is the fact that the water tank is concealed behind the wall. It still remains accessible through the flush plate opening but stays out of view or you can use flush valves as well which are directly connected to the main water line to the bathroom. The bowl is mounted to the wall and the plumbing is connected to the water tank inside the wall.

Wall Hung Toilets Comes with Quiet close seat, Quick Release, Easy to Clean, High-profile, concealed design makes cleaning easier and creates a sleek and smooth look.

In addition, the concealed water tank also keeps the bathroom simple and easier to coordinate with the rest of the home, if you've chosen a minimalist, contemporary design. It's a really great way of getting rid of big eyesores in this case since you can also conceal the water outlets and other elements of the toilet.

Another advantage is that wall-mounted toilets make cleaning easier. Since they're not attached to the floor in any way, cleaning the space underneath is considerably easier.



WHY US ?

Durable



400 Kg. Weight Test

All wall hung WC pans and concealed cisterns can hold up to 400 kg.



Weight Test

All seats and covers are subjected to a weight test.



Open/Close Test

All seats and covers are subjected to an open/close test.



Stainless Steel Hinges

Seats and cover hinges are produced out of wear and water-resistant stainless steel.



Stainless Steel Connection Flexes

Connection flexes of wall hung WC pans are produced out of water-resistant and long-lasting stainless steel material.

Hygienic



Glazed Duct and Flusher Interior

WC pans are dirt-proof, easy-cleaning and hygienic thanks to the glazed surface in duct and flusher.



Functional Test

All WC pans are subjected to a 6-liters functional test.



Odor Test

All WC pans are subjected to an odor leakage test.



Easily Removable Seats & Covers

Easy to clean thanks to the special hinge.

Silent



Soft Close Seats & Covers

Soft Close Seats & Covers
Soft Closing and silent
Special technology

Water Conserving



3 / 7 Ltr. WC Pans

Saves water with 3 Ltr. consumption for half function and 7 Ltr. consumption for full function.



1 Ltr. Urinals

Saves water with only 1 Ltr. of water consumption.

CONTENTS



01

ONE PIECE
CLOSET



06

TWO PIECE
CLOSET



07

WALL HUNG
CLOSET



09

WATER CLOSET



11

ONE PIECE BASIN



13

WASH BASIN
PEDESTAL



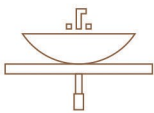
15

WASH BASIN
HALF PEDESTAL



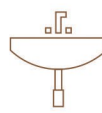
16

HALF WALL
HUNG BASIN



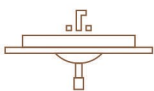
18

TABLE TOP BASIN



23

WALL HUNG
BASIN



26

COUNTER BASIN



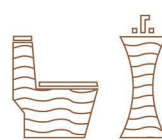
27

PAN



28

URINAL



31

DESIGNER
COLLECTION

≡ ONE PIECE CLOSET



ONE PIECE CLOSET



134 - Icy Syphonic-5D
 Size : 660x355x740mm
 S Trap : 225mm



135 - Deny
 Size : 655x340x750mm
 S Trap : 225mm | P Trap



138 - Alpy
 Size : 740x360x820mm
 S Trap : 225mm



137 - Qubo
 Size : 660x420x600mm
 S Trap : 225mm



136 - Silken
 Size : 740x380x685mm
 S Trap : 225mm | P Trap



128 - Rosy
 Size : 690x370x770mm
 S Trap : 225mm | P Trap



101 - Sentro
 Size : 660x350x680mm
 S Trap : 225mm | P Trap



102 - Combo
 Size : 640x350x720mm
 S Trap : 225mm | P Trap



103 - Recto
 Size : 640x360x710mm
 S Trap : 225mm | P Trap

ONE PIECE CLOSET



104 - Vega
Size : 680x360x745mm
S Trap : 225mm | P Trap



105 - Europa
Size : 630x350x720mm
S Trap : 225mm | P Trap



106 - Belino
Size : 650x350x710mm
S Trap : 225mm,100mm | P Trap



107 - Spice
Size : 640x340x680mm
S Trap : 225mm | P Trap



108 - Aqua Jet
Size : 700x350x670mm
S Trap : 225mm | P Trap



108 - Classic
Size : 700x350x670mm
S Trap : 225mm | P Trap



109 - Crystal
Size : 700x360x740mm
S Trap : 225mm, 100mm



110 - Royal
Size : 640x360x720mm
S Trap : 225mm | P Trap



111 - Diamond
Size : 670x370x760mm
S Trap : 225mm | P Trap

ONE PIECE CLOSET



112 - Nexa Syphonic
Size : 670x370x760mm
S Trap : 300mm



113 - Cosmo
Size : 650x355x730mm
S Trap : 225mm



114 - Neo
Size : 680x355x720mm
S Trap : 225mm



115 - Sonata
Size : 660x360x700mm
S Trap : 225mm



116 - Classy
Size : 665x360x720mm
S Trap : 225mm | P Trap



117 - Swiss
Size : 685x350x750mm
S Trap : 225mm | P Trap



118 Syphonic-4D
Size : 660x350x740mm
S Trap : 225mm

- 4D Flush
- Syphonic Flush
- Rimless Design
- Soft Close Seat Cover
- Dual Flush



119 - Sigma
Size : 665x370x710mm
S Trap : 225mm | P Trap



120 - Delta
Size : 650x370x780mm
S Trap : 225mm

ONE PIECE CLOSET



122 - Little Syphonic
Size : 670x430x630mm
S Trap : 225mm



123 - Baby
Size : 520x270x550mm
S Trap : 150mm | P Trap



125 - Aside
Size : 630x350x720mm
S Trap : 225mm



126 - Marvel
Size : 700x380x810mm
S Trap : 225mm | P Trap



127 - Smith
Size : 720x380x780mm
S Trap : 225mm



130 - Scope
Size : 650x350x745mm
S Trap : 225mm



131 - Vintage
Size : 710x390x775mm
S Trap : 225mm



132 - Evera
Size : 690x365x680mm
S Trap : 225mm



Privy Toilet
Size : 710x435x490mm
S Trap : 225mm

≡ TWO PIECE CLOSET



Slim Set
Size : 635x365x750mm
S Trap : 225mm | P Trap



Cozy Set
Size : 630x365x750mm
S Trap : 225mm | P Trap



Vitro Set
Size : 635x360x810mm
S Trap : 225mm | P Trap



Aqua Set
Size : 660x370x750mm
S Trap : 225mm | P Trap

≡ WALL HUNG CLOSET



WALL HUNG CLOSET



3003
Size : 500x345x350mm



3001
Size : 490x340x370mm



3004
Size : 500x360x370mm



3006
Size : 540x340x360mm



3014
Size : 510x360x360mm



3015
Size : 510x340x360mm

≡ WATER CLOSET





3011 - E.W.C.
Size : 510x350x400mm
S Trap | P Trap



3002 - E.W.C.
Size : 550x350x410mm
S Trap | P Trap



3012 - E.W.C.
Size : 535x355x410mm
S Trap | P Trap



3013 - E.W.C. DIAMOND
Size : 525x370x405mm
S Trap



3016 - E.W.C.
Size : 510x350x440mm
S Trap



Anglo
Size : 530x450x410mm
S Trap | P Trap



Square E.W.C.
Size : 470x340x400mm
S Trap



Round Concealed E.W.C.
Size : 475x380x430mm
S Trap



E.W.C.
Size : 480x365x415mm
S Trap | P Trap

ONE PIECE BASIN



2 in 1
Size : 445x560x850mm



20000
Size : 390x390x815mm



19000
Size : 415x415x830mm



21000
Size : 330x330x800mm



22000
Size : 385x385x820mm

ONE PIECE BASIN



7000 - White
Size : 380x380x820mm



9000 - White
Size : 380x380x840mm



12000
Size : 360x460x850mm



15000
Size : 420x420x815mm



16000
Size : 410x410x875mm



17000
Size : 330x330x800mm

≡ WASH BASIN PEDESTAL



WASH BASIN PEDESTAL



Lavish Set
Size : 580x460x860mm



Regal Set
Size : 620x475x850mm



Rosella Set
Size : 570x460x890mm



Rio Set
Size : 520x430x840mm



Alfa Set
Size : 560x435x860mm



Sonata Set
Size : 570x430x880mm



Diamond Set
Size : 580x490x890mm



Big Sterling Set
Size : 640x530x910mm

WASH BASIN PEDESTAL



Supreme Set
Size : 580x445x865mm



Repose Set
Size : 570x410x860mm



20"x16" Set
Size : 520x410x850mm



Polo Set
Size : 580x430x860mm



Alpine Set
Size : 570x420x880mm



Stargold Set
Size : 590x470x900mm



Rajwadi Set
Size : 580x440x880mm



Half Pedestal Polo Set
Size : 580x430x520mm



Half Pedestal Diamond Set
Size : 580x490x565mm

≡ HALF WALL HUNG BASIN



Rosa
Size : 470x490x390mm



Moon
Size : 350x350x375mm



Cube
Size : 460x330x390mm



Lagoon
Size : 385x385x380mm



Prism
Size : 460x500x390mm

≡ HALF WALL HUNG BASIN



Luxe
Size : 380x380x390mm



Orbit
Size : 560x560x370mm



Dove
Size : 475x430x345mm



Noble
Size : 395x400x380mm



Deluxe
Size : 450x435x400mm

≡ TABLE TOP BASIN



2001
Size : 420x320x180mm



2002
Size : 400x400x170mm



2003
Size : 560x380x110mm



2004
Size : 360x420x150mm



2005
Size : 380x380x150mm



2006
Size : 500x320x130mm



2007
Size : 450x450x140mm



2008
Size : 560x405x100mm



2010
Size : 470x470x120mm

TABLE TOP BASIN



2011
Size : 365x270x140mm



2012
Size : 435x435x135mm



2013
Size : 450x330x130mm



2014
Size : 420x420x140mm



2015
Size : 400x400x130mm



2017
Size : 470x360x130mm



2018
Size : 475x380x135mm



2019
Size : 580x455x120mm



2020
Size : 400x310x115mm

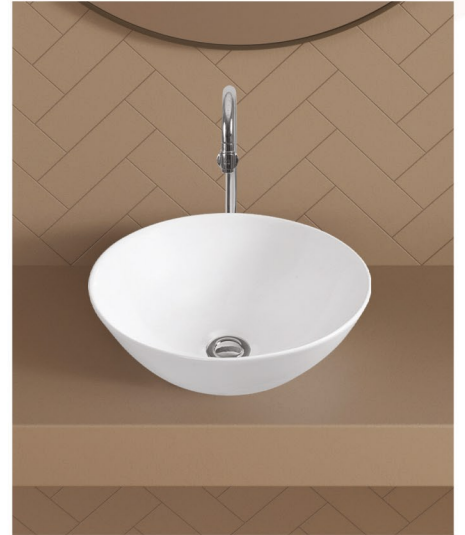
≡ TABLE TOP BASIN



2021
Size : 290x320x100mm



2022
Size : 460x370x115mm



2023
Size : 420x420x145mm



2025
Size : 500x400x160mm



2026
Size : 580x400x140mm



2028
Size : 410x410x150mm



2029
Size : 410x410x150mm



2030
Size : 520x330x180mm



2031
Size : 575x345x150mm

TABLE TOP BASIN



2032
Size : 590x380x135mm



2034
Size : 460x350x130mm



2036
Size : 420x380x145mm



2037
Size : 620x375x160mm



2038
Size : 470x470x165mm



2041
Size : 575x375x130mm



2042
Size : 635x390x110mm



2043
Size : 690x350x140mm



2044
Size : 590x410x140mm

TABLE TOP BASIN



2045
Size : 600x390x150mm



2046
Size : 395x500x140mm



2047
Size : 500x400x130mm



2048
Size : 400x370x130mm



2049
Size : 530x370x140mm



2050
Size : 340x340x135mm



2051
Size : 420x420x160mm



2052
Size : 800x480x140mm



2053
Size : 610x445x130mm



18"x13"



22"x16"



20"x16"



18"x12"



18"x10"



14"x11"



16"x16"



Sop
Size : 270x330x130mm



Dip
Size : 400x340x175mm



Duck
Size : 430x295x130mm



Pool
Size : 330x295x125mm



Rich
Size : 420x320x100mm



Tiny
Size : 350x350x135mm

WASH BASIN



Mini
Size : 470x360x160mm



Joy
Size : 470x340x200mm



Bliss
Size : 460x330x160mm



Fine
Size : 390x270x150mm



Prime
Size : 455x380x160mm



Micro
Size : 320x235x190mm

≡ COUNTER BASIN



4002
Size : 560x400x230mm



4003
Size : 600x450x165mm



4005
Size : 600x450x160mm



4006
Size : 550x405x180mm



4007
Size : 470x345x180mm



4008
Size : 560x410x200mm



Heavy Orissa Pan 23"
Size : 590x460x280mm



Heavy Orissa Pan 23" (Boxrim)
Size : 600x460x280mm



Orissa Pan 23"
Size : 590x430x230mm



Orissa Pan 21"
Size : 520x420x280mm



Orissa Pan 20"
Size : 520x410x230mm



CT Pan
Size : 520x400x160mm



Aqua Pressure Pan 21"
Size : 520x410x280mm



Apex Urinal
Size : 260x230x545mm



Solid Urinal
Size : 325x335x580mm



Wind Urinal
Size : 310x340x460mm



Half Stall Urinal
Size : 410x360x610mm



Flat Urinal
Size : 310x280x380mm



Gents Urinal
Size : 320x250x390mm



John Urinal
Size : 320x280x455mm



Ladies Urinal
Size : 450x355x100mm



Sink
Size : 24"x18"x10" & 18"x12"x6"



P-trap



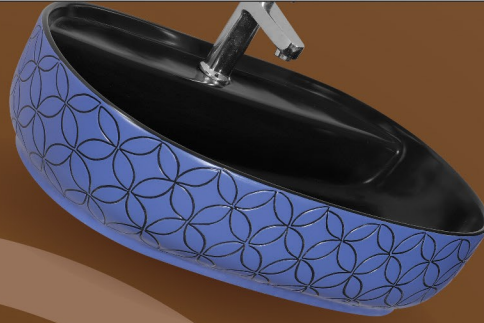
Big P-trap

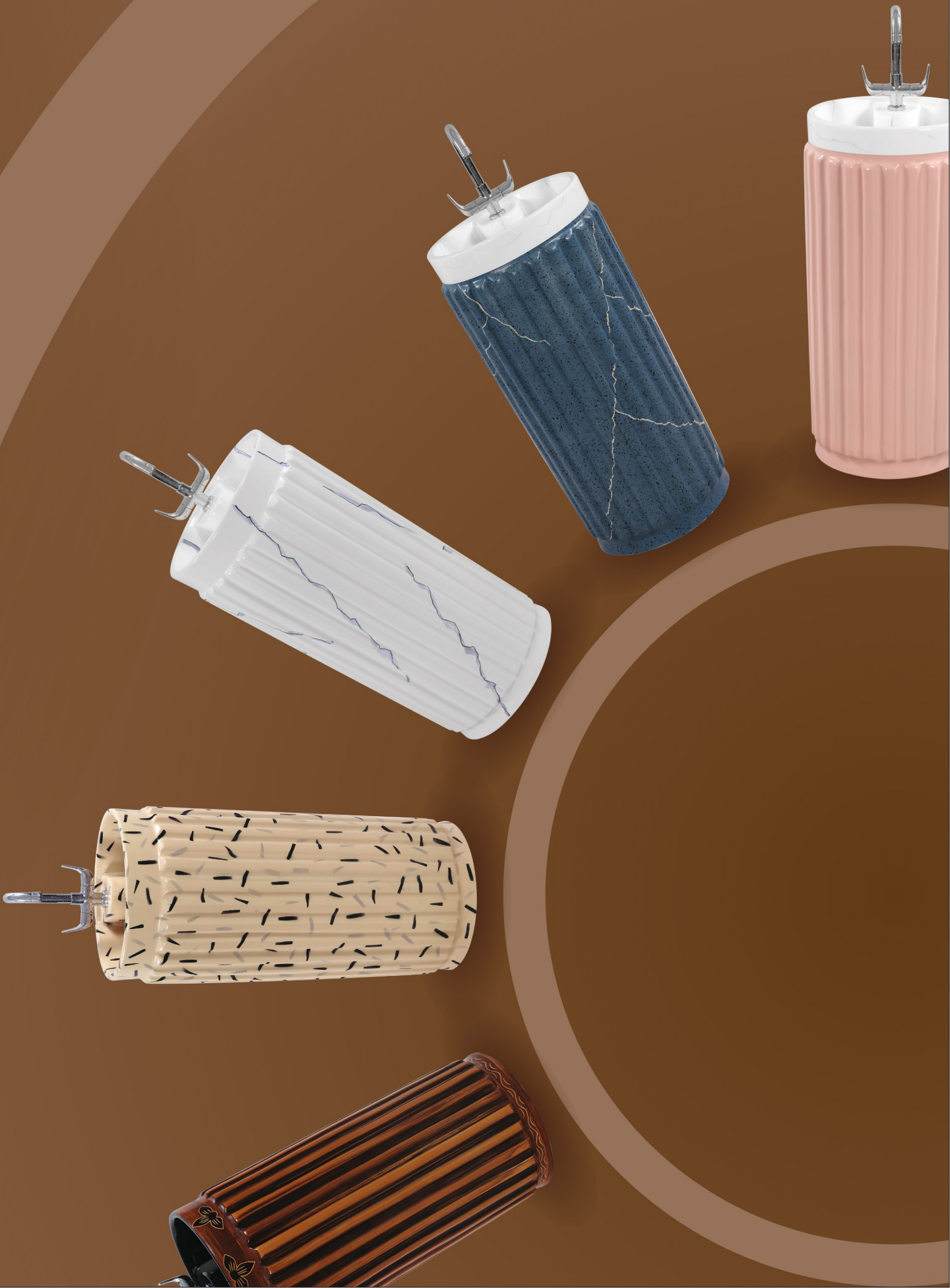


S-trap

Hand-Crafted Art Collection

Rawness of an artist's impressions smartly customized into practical application. Textures, tones and patterns forging into attractive decor formations. Representing contemporary yet elegant bathroom spaces.





DESIGNER QUBO ONE PIECE CLOSET



Qubo-01



Qubo-02



Qubo-03



Qubo-04



Qubo-05



Qubo-06



Qubo-07



Qubo-08



Qubo-09

≡ DESIGNER QUBO ONE PIECE CLOSET



Qubo-10



Qubo-11



Qubo-12



Qubo-13



Qubo-14



Qubo-15



Qubo-16

DESIGNER ROSY ONE PIECE CLOSET



Rosy-01



Rosy-02



Rosy-03



Rosy-04



Rosy-05



Rosy-06



Rosy-07



Rosy-08



Rosy-09

DESIGNER ROSY ONE PIECE CLOSET



Rosy-10



Rosy-11



Rosy-12



Rosy-13



Rosy-14



Rosy-15



Rosy-16



Rosy-17



Rosy-18

DESIGNER ROSY ONE PIECE CLOSET



Rosy-19



Rosy-20



Rosy-21



Rosy-22



Rosy-23



Rosy-24



Rosy-25

≡ DESIGNER DELTA ONE PIECE CLOSET



Delta-01



Delta-02



Delta-03



Delta-04



Delta-05



Delta-06



Delta-07



Delta-08



Delta-09

DESIGNER DELTA ONE PIECE CLOSET



Delta-10



Delta-11



Delta-12



Delta-13



Delta-14



Delta-15



Delta-16



Delta-17



Delta-18

≡ DESIGNER DELTA ONE PIECE CLOSET



Delta-19



Delta-20



Delta-21



Delta-22



Delta-23



Delta-24



Delta-25

DESIGNER DENY ONE PIECE CLOSET



Deny-01



Deny-02



Deny-03



Deny-04



Deny-05



Deny-06



Deny-07



Deny-08



Deny-09

DESIGNER DENY ONE PIECE CLOSET



Deny-10



Deny-11



Deny-12



Deny-13



Deny-14



Deny-15



Deny-16



Deny-17

**≡ DIAMOND DOUBLE COLOR
ONE PIECE CLOSET**



111-Black



111-Burgundy



111-Red



111-WKY



111-Alpine Blue



111-Orange

**≡ DIAMOND DOUBLE COLOR
ONE PIECE CLOSET**



111-Line Marble



111-Line Yellow



111-Line Green



111-Line Red



111-Line Blue



111-Line Black

DESIGNER ONE PIECE CLOSET



117-Black Stone



117-Chizzle



117-Liner



117-Waves



117-Oliver



117-Marble



117-Light Wood



117-Wooden



117-Carbon Stone

≡ DESIGNER ONE PIECE CLOSET



117-Wokkey



117-Black



117-Graphite



106-Stone



106-Appy



106-Black

DESIGNER ONE PIECE CLOSET



115-Marble



115-Blacky



115-Light



115-Berry



115-Woody



115-Goodies



115-Spanish



115-Cherry

DESIGNER TWO PIECE CLOSET



115-Italian



115-Black Stone



Slim Set-Marble

≡ VITROSA ONE PIECE CLOSET



101-Mint Green



101-Majenta



101-Aqua Green



101-Alpine Blue



103-Mint Green



103-Majenta



103-Aqua Green



103-Alpine Blue



≡ DOUBLE COLOR ONE PIECE CLOSET



101-Alpine Blue



101-Aqua Green



101-Black



101-Burgundy



101-Pink



101-Red



101-Coffee Brown



101-Red Brown



101-WKY

≡ DOUBLE COLOR ONE PIECE CLOSET



101-Magenta



101-T. Blue



101-Mint Green



101-Orange



101-Wooden



101-Marble



101-Multi Color



101-Wood Marble

DESIGNER PRIVY TOILET



Privy-01



Privy-02



Privy-03



Privy-04



Privy-05



Privy-06



Privy-07



Privy-08



Privy-09

≡ DIAMOND DOUBLE COLOR
FLOOR MOUNT CLOSET



3013-Black



3013-Red



3013-WKY



3013-Alpine Blue



3013-Orange



3013-Line Yellow



3013-Line Black



3013-Line Green



3013-Line Marble



3013-Line Red



3013-Line Blue

EURO / LUDO DESIGNER
FLOOR MOUNT CLOSET



Euro-1



Euro-2



Euro-3



Euro-4



Euro-5



Ludo-1



Ludo-2



Ludo-3



DESIGNER ONE PIECE BASIN
20000 Size : 390x390x815mm



20007



20001



20002



20003



20004



20016



20005



20006

DESIGNER ONE PIECE BASIN
20000 Size : 390x390x815mm



20008



20009



20010



20011



20012



20013



20014



20015



20017



20018



20019



20020

DESIGNER ONE PIECE BASIN
14000 Size : 400x470x870mm



14001



14002



14003



14004



14005



14006



14007



14008



14009

DESIGNER ONE PIECE BASIN
14000 Size : 400x470x870mm



14010



14011



14012



14013



14014



14015



14016



14017



14018



14019



14020

DESIGNER ONE PIECE BASIN
15000 Size : 420x420x815mm



15005



15001



15002



15006



15003



15004

DESIGNER ONE PIECE BASIN
15000 Size : 420x420x815mm



15011



15007



15008



15009



15010



15012



15013



15014



15015

DESIGNER ONE PIECE BASIN
16000 Size : 410x410x875mm



16003



16001



16002



16004



16005



16006



16007

DESIGNER ONE PIECE BASIN
16000 Size : 410x410x875mm



16008



16009



16010



16011



16012



16013



16014



16015



16016

DESIGNER ONE PIECE BASIN
18000 Size : 360x420x820mm



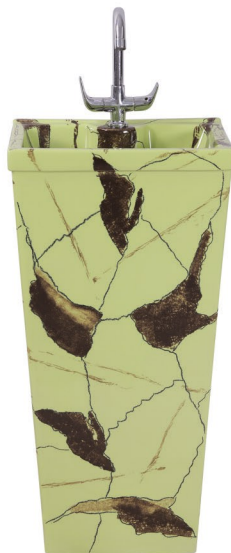
18001



18002



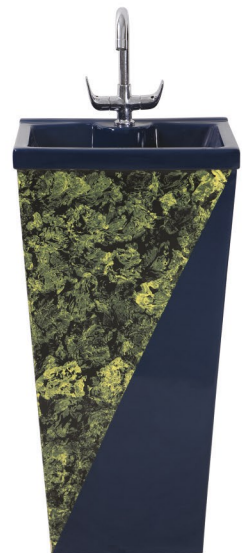
18003



18004



18005



18006



18007



18008



18009



18010

DESIGNER ONE PIECE BASIN
19000 Size : 415x415x830mm



19005



19001



19002



19003



19004



19006



19007



19008



19009



19010

DESIGNER ONE PIECE BASIN
7000 Size : 380x380x820mm



7005



7001



7002



7003



7004



7006



7007



7008



7009



7010



7011

DESIGNER ONE PIECE BASIN
7000 Size : 380x380x820mm



7012



7013



7014



7015



7016



7017



7018



7019



7020



7021



7022



7023



7024



7025

DESIGNER ONE PIECE BASIN
12000 Size : 360x460x850mm



12002



12001



12003



12004



12005



12007



12008

DESIGNER ONE PIECE BASIN
12000 Size : 360x460x850mm



12006



12009



12010



12011



12012



12013



12014

DESIGNER ONE PIECE BASIN
9000 Size : 380x380x840mm



9010



9001



9002



9003



9004



9005



9006



9007



9008



9009



9011

DESIGNER ONE PIECE BASIN
17000 Size : 330x330x800mm



17003



17001



17002



17004



17005



17006



17007



17008



17009



17010

DESIGNER ONE PIECE BASIN
21000 Size : 330x330x800mm



21001



21002



21003



21004



21005



21006



21007



21008



21009



21010



21011



21012

DESIGNER ONE PIECE BASIN
21000 Size : 330x330x800mm



21013



21014



21015



21016



21017



21018



21019



21020



21021



21022



21023



21024



21025

DESIGNER ONE PIECE BASIN
10000 Size : 430x430x855mm



10001



10002



10003



10004



10005



10006



10007



10008



10009



10010

DESIGNER ROSA
HALF WALL HUNG BASIN



Rosa-01



Rosa-02



Rosa-03



Rosa-04



Rosa-05



Rosa-06



Rosa-07



Rosa-08



Rosa-09

DESIGNER ROSA
HALF WALL HUNG BASIN



Rosa-10



Rosa-11



Rosa-12



Rosa-13



Rosa-14



Rosa-15



Rosa-16



Rosa-17



Rosa-18

DESIGNER ROSA
HALF WALL HUNG BASIN



Rosa-19



Rosa-20



Rosa-21



Rosa-22



Rosa-23



Rosa-24



Rosa-25

DESIGNER MOON
HALF WALL HUNG BASIN



Moon-01



Moon-02



Moon-03



Moon-04



Moon-05



Moon-06

DESIGNER MOON
HALF WALL HUNG BASIN



Moon-07



Moon-08



Moon-09



Moon-10



Moon-11



Moon-12



Moon-13



Moon-14



Moon-15

DESIGNER PRISM
HALF WALL HUNG BASIN



Prism-01



Prism-02



Prism-03



Prism-04



Prism-05



Prism-06



Prism-07



Prism-08

DESIGNER PRISM
HALF WALL HUNG BASIN



Prism-09



Prism-10



Prism-11



Prism-12



Prism-13



Prism-14



Prism-15



Prism-16



Prism-17

DESIGNER CUBE
HALF WALL HUNG BASIN



Cube-01



Cube-02



Cube-03



Cube-04



Cube-05



Cube-06



Cube-07



Cube-08



Cube-09



Cube-10

DESIGNER CUBE
HALF WALL HUNG BASIN



Cube-11



Cube-12



Cube-13



Cube-14



Cube-15



Cube-16



Cube-17



Cube-18



Cube-19



Cube-20

DESIGNER ORBIT
HALF WALL HUNG BASIN



Orbit-01



Orbit-02



Orbit-03



Orbit-04



Orbit-05



Orbit-06



Orbit-07



Orbit-08



Orbit-09



Orbit-10



Orbit-11



Orbit-12



DESIGNER ROSELLA SET



1101



1102



1103



1104



1105



1106



1107



1108



1109

DESIGNER ROSELLA SET



1110



1111



1112



1113



1114



1115



1116



1117



1126



1127

DESIGNER ALFA SET



401



402



403



404



405



406



407



408

DESIGNER ALFA SET



409



410



411



412



413



414



415



416

DESIGNER DIAMOND SET



851-Black



853-Aqua Green



854-Magenta



856-Mint Green



855-Alpine Blue

DESIGNER ALPINE SET



701



702



703



704



705



708



710



715



716

DESIGNER BIG STERLING SET



1001



1002



1003



1004



1005



1006



1007



1008



1009



1012



1013



1014

DESIGNER BIG STERLING SET



1010



1015



1016



1017



1018



1021

DESIGNER POLO SET



801



802



803



804



805



806



807



808



809



811



813



815

DESIGNER POLO SET



817



818



819



820



821



822



823

DESIGNER 18"x13" SET



901



902



903



904



905



906



907

DESIGNER 18"x13" SET



908



909



910



911



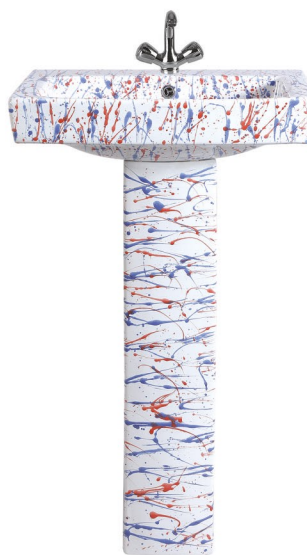
913



915



917



918



920

DESIGNER RANI SET



621



622



623



626



624



625

DESIGNER STARGOLD SET



203



204



205



206



208



209



210



211



212

DESIGNER STARGOLD SET



213



214



215



216



217



301



302



303



304



305



306



307

DESIGNER STARGOLD SET



308



309



315



316



501



502



504



1000

DESIGNER STARGOLD SET



510



505



506



507



508



509



511



512



513

DESIGNER RUSTIC STARGOLD SET



Rustic Set No.1



Rustic Set No.2



Rustic Set No.3



Rustic Set No.4



Rustic Set No.5



Rustic Set No.6

DESIGNER TABLE TOP BASIN



SS-01



SS-02



SS-03



SS-04



SS-05



SS-06



SS-07



SS-08



SS-09



SS-10



RR-01



RR-02

DESIGNER TABLE TOP BASIN



RR-03



RR-04



RR-05



RR-06



RR-07



RR-08



RR-09



RR-10



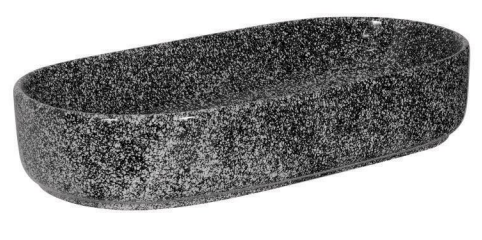
QQ-01



QQ-02



QQ-03



QQ-04

DESIGNER TABLE TOP BASIN



QQ-05



QQ-06



QQ-07



QQ-08



QQ-09



QQ-10



M-09



M-10



M-11



M-12

≡ DESIGNER TABLE TOP BASIN



Matty-01



Matty-02



Matty-03



Matty-04



Matty-05



Matty-06



Matty-07



Matty-08



Matty-09

≡ DESIGNER TABLE TOP BASIN



Matty-10



Matty-11



Matty-12



Matty-13



Matty-14



Matty-15



Matty-16



Matty-17



Matty-18

DESIGNER TABLE TOP BASIN



VV-01



VV-02



VV-03



VV-04



VV-05



VV-06



VV-07



VV-08



VV-09



VV-10



VV-11



VV-12

DESIGNER TABLE TOP BASIN



YY-01



YY-02



YY-03



YY-04



YY-05



YY-06



YY-07



YY-08



YY-09



YY-10



YY-11



YY-12

DESIGNER TABLE TOP BASIN



UU-01



UU-02



UU-03



UU-04



UU-05



UU-06



UU-07



UU-08



UU-09

DESIGNER TABLE TOP BASIN



UU-10



UU-11



UU-12



UU-14



UU-13



UU-15



UU-16



XX-01



XX-02



XX-03



XX-04



XX-05

DESIGNER TABLE TOP BASIN



XX-06



XX-07



XX-08



XX-09



XX-10



XX-11



XX-12



XX-13



XX-14

DESIGNER TABLE TOP BASIN



WW-01



WW-02



WW-03



WW-04



WW-05



WW-06



WW-07



WW-08



WW-09

DESIGNER TABLE TOP BASIN



WW-10



WW-11



WW-12



WW-13



WW-14



WW-15



WW-16



WW-17



WW-18

DESIGNER TABLE TOP BASIN



PP-01



PP-02



PP-03



PP-04



PP-05



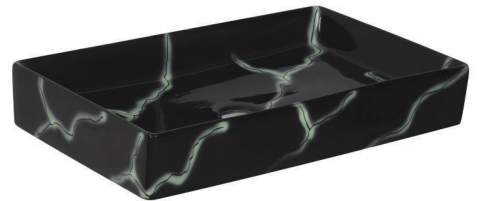
PP-06



PP-07



PP-08



PP-09



PP-10



PP-11



PP-12

DESIGNER TABLE TOP BASIN



A-1



A-2



A-3



A-4



A-5



A-6



A-7



A-8



A-9



A-10



A-11

DESIGNER TABLE TOP BASIN



B-1



B-2



B-3



B-4



B-5



B-6



B-8



B-9



B-15



D-1



D-2



E-1

DESIGNER TABLE TOP BASIN



E-2



E-3



E-4



E-5



E-6



E-7



E-8



E-11



E-12



F-1



F-2



F-3

DESIGNER TABLE TOP BASIN



F-4



G-1



G-2



G-3



G-4



G-5



H-1



J-1



J-2



J-3



J-4



J-5

DESIGNER TABLE TOP BASIN



K-1



L-1



L-2



M-1



M-2



M-3



M-4



M-5



M-6



M-7



M-8



N-1

DESIGNER TABLE TOP BASIN



N-2



N-3



N-4



N-5



O-1



O-2



Q-1



Q-2



R-1



R-2



R-3



X-1

DESIGNER TABLE TOP BASIN



Y-1



Y-2



Y-3



Y-4



Y-5



Z-1



Z-2



CC-1



CC-2



CC-3



CC-4



DD-1

DESIGNER TABLE TOP BASIN



DD-2



EE-1



EE-2



EE-3



EE-4



FF-1



FF-2



FF-3



FF-4



HH-1



HH-2



HH-3

DESIGNER TABLE TOP BASIN



JJ-1



JJ-2



JJ-3



KK-1



2021-Butter Scotch



2021- Sapia



2021-Tera Cotta



2021-Fern



2021-Pearl



≡ VITROSA 18"x12" WASH BASIN



601



602



604



605



606



607



608



609



610



611



613

≡ VITROSA RANI WASH BASIN



622



621



623



624



625



626



631 (16x16 Corner)



632 (16x16 Corner)

≡ RUSTIC 18"x12" WASH BASIN



18"x12"- Alpine Blue



18"x12"- Black



18"x12"- Coffee Brown



18"x12"- Magenta



18"x12"- Red Brown

≡ DOUBLE COLOR CORNER WASH BASIN



2004-Alpine Blue



2004-Majenta



2004-WKY



2004-Black



2004-Burgundy

 **DOUBLE COLOUR PAN**



Orissa Pan-20" Black



Orissa Pan-20" Mint Green



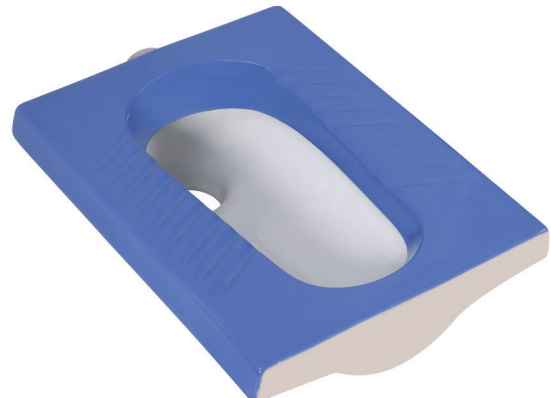
Orissa Pan-20" Magenta



Orissa Pan-20" Orange



Orissa Pan-20" Red Brown



Orissa Pan-20" Alpine Blue

≡ **DOUBLE COLOUR PAN**



Orissa Pan-20" Coffee Brown



Orissa Pan-20" Aqua Green



Orissa Pan-20" Burgundy



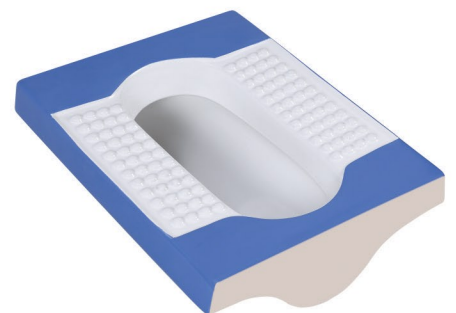
Orissa Pan-20" Walker Yellow



Orissa Pan-20" Wooden



Aqua Pressure Orisa Pan-21"
Majenta



Aqua Pressure Orisa Pan-21"
Alpine Blue

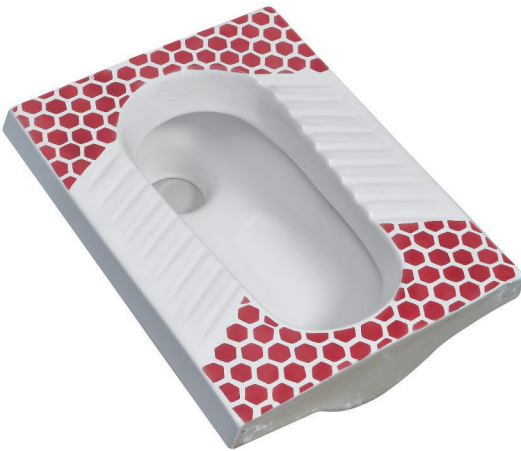
DESIGNER COLOUR PAN



Designer-01 Orisa Pan 20"
Aqua Green



Designer-02 Orisa Pan 20"
Orange



Designer-03 Orisa Pan 20"
Red



Designer-04 Orisa Pan 20"
Mint Green



Designer-05 Orisa Pan 20"
Alpine Blue



Designer-06 Orisa Pan 20"
Magenta



Orissa Pan-20" Alpine Blue



Orissa Pan-20" Magenta



Orissa Pan-20" Red Brown



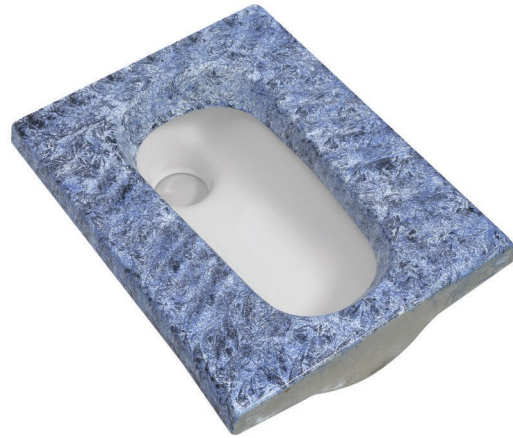
Orissa Pan-20" Black



Orissa Pan-20" Coffee Brown



Orisa Pan 20" Yellow Marble



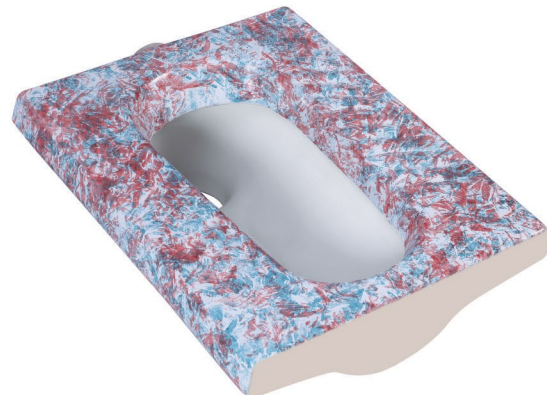
Orisa Pan 20" Blue Marble



Orisa Pan 20" Orange Marble



Orisa Pan-20" Marble



Orisa Pan 20" Aqua Green Marble



E.W.C



ANGLO



No. 735



No. 792



No. 743



No. 729



No. 710



No. 775



No. 784



No. 780



No. 735 Slim



No. 792 Slim



No. 743 Slim

FLUSH FITTING



FLUSH TANK



Cistern 01



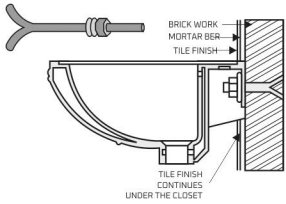
Cistern 02



Cistern 03

ONE PIECE TESTED
BY VACUUM MACHINE





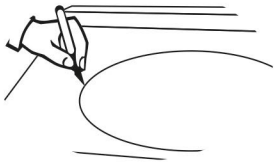
WALL HUNG BASIN

As per shown in the picture, the rag bolt must be grouted into the cement/concrete wall. The bolts must be fixed to the cement/concrete wall. Allow setting & checking than install it using nut and washer.

COUNTER WASHBASIN

At the beginning

1. A skilled or experienced person should install counter lavatories.
2. Avoid using adhesive with this product.
3. Check the waste area and supply tubing if required.
4. Do not open the lavatory from its protective carton until you are ready for installation.
5. Please follow all local building and plumbing codes.



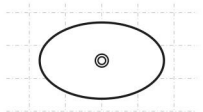
MATERIAL & TOOLS

Measure tape, Keyhole or saber saw, Hammer, Glasses, Rags or Paper toweling, Drill (1/2 dia, drill bit or larger), Pencil, sealant, sharp knife or scissors.

INSTALLATION OF LAVATORY

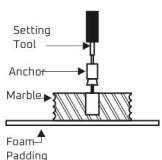
Please Note : Please install it in a way that future removal from underneath the counter top is possible without damaging the counter top.

1. Please check the desired location for clearance between the back splash, faucet, Fixture and cabinet.
2. Please cut the template.
3. Please carefully trace the template on the counter top directed.
4. Please mark the faucet hole centerline on the counter top.
5. Please drill a 1/2" pilot on the inside of the cut line.



For Wood Counter tops:

1. Mark and pre-drill the wood screw holes at the locations shown on the template.
2. Waterproof any exposed areas of wood.



For Marble Counter tops:

1. Position the counter top upside down on foam padding to protect the surface. Mark and drill 3/5" holes 5/8" deep at the locations shown on the template.
2. Use a setting tool and hammer to secure the anchors.



For All Installations:

1. If the counter top has not been installed, install it at this time.
2. Drill the faucet holes according to the faucet installation instructions.
3. Install the faucet to the counter top according to the manufacture's instructions.
4. Install the drain to the lavatory according to the manufacture's instructions.

≡ TROUBLESHOOTING GUIDE

| ITEM | PROBLEM | PROBABLE REASONS | CORRECTIVE ACTIONS |
|----------------------------------|--|--|--|
| Wash Basin / Table Top | 1. Overflow Choked and Foul Bed Odor | Waste Coupling used may be full threaded | Waste Coupling should be changed to slot cut coupling |
| | 2. Water Deposit on Tap Platform Area and inside Bowl Area | Basin is not fixed in level or Bracket is not in level | Should be done by Proper leveling |
| | 3. There is no Tap Hole in Basin | Tap Hole could be semi punched from back side | Tap Hole should be created by Plumber from semi punched Area |
| EWC / Pan / Anglo Indian | 1. Water not coming in Bowl Area while Flushing | Flush Bend is not inserted up to the end of Inlet Hole | Insert the Flush pipe up to the end of inlet For Pan Closet; Check whether Flush pipe is not Covering Flush Hole which is in both side of Inlet wall |
| | | Closet / Pan may be not Leveled | Should be done by Proper leveling |
| One Piece Closet | 1. Water not coming in Bowl Area while Flushing | Mechanism Inside tank could not working properly | Change the Center Pump of Mechanism |
| | | There is no water in Flush Tank | Increase the Ball Cock Height to the max level |
| | 2. Water is continuously Leaking Inside the Bowl | Mechanism Inside tank could not working properly | Change the Center Pump of Mechanism |
| | 3. Water quantity Insufficient for effective Flushing | Ball cock Height Adjusted at lower level | Increase the Ball Cock Height to the max level |
| Wall Hung Water Closet | 1. Water not coming in Bowl Area while Flushing | Flush valve may not working properly / Concealed Cistern is not working properly | Should change Flush valve / Concealed Cistern |
| | | Flush pipe is not inserted up to the end of Inlet hole | Insert the Flush pipe up to the end of Inlet |
| | 2. Water is continuously Leaking Inside the Bowl | Closet is not Leveled properly | Closet should be in Proper level |
| Couple Closet (2 Pcs. Closet) | 1. Uneven Flow of water from both side of closet Bowl | Both arm of Diverter pipe not inserted equally in both side of the closet | Both arm of Diverter pipe should be inserted equally in both side of the closet |
| | | Diverter pipe not fixed properly in the outlet of cistern | Diverter pipe should be fixed properly in the outlet of cistern |
| | 2. Water is Leaking between the Cistern and Closet | Rubber Ring containing bolt is not tightened properly | Rubber Ring containing bolt is should be tightened properly |



MAINTENANCE

Like any other part of your house, the bathroom can be made to look great and made to last long if it is taken care of regularly. To make your bathroom beautiful here are some invaluable tips.

Wash Basin :

A mild detergent can be used to wash the basin at least once a day. After washing, the basin should be wiped out clearly to avoid water stains.

Closets :

Cleanser like Harpic can be used to clear the closet with soft plastic brush, at least once a day.

To avoid minute discoloring, after flushing the toilet give it a once over with the soft brush.

Keep the toilet brush handy in a convenient stand nearby.

In case of toilets and basins, if there has been no maintenance since long period of time, water deposits and discoloration can form on the surface of areas that get wet. In such cases, these stains/marks can be removed with the help of a solution of dilute hydrochloric acid.

Clean with a soft cotton cloth and warm water with soap.

Do not use thinner, day cleaning liquids or powder paste. Use a liquid cleaner at least twice a week.

Use brasso or car rubbing compound and then polish with a cloth to remove fine scratches.

Thank You...